

XR30 Diffuser Installation

1.



Remove the four corner screws and four fan screws from the lens frame.

2.



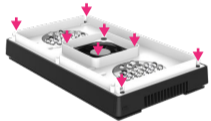
Remove the lens frame.

3.



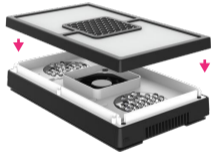
Place the reflector on to the light assembly.

4.



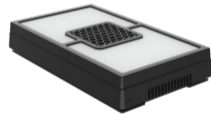
Fasten the reflector with the original corner and fan screws.

5.



Place the magnetic diffuser plate including the diffuser film over the light assembly.

6.



The diffuser is now ready to use.